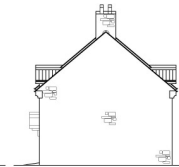




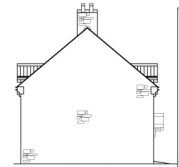
FRONT ELEVATION HOUSES 1-3



SIDE ELEVATION HOUSES 1-3



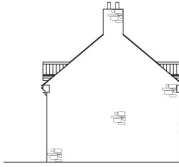
FRONT ELEVATION HOUSES 4-6



SIDE ELEVATION HOUSES 4-6



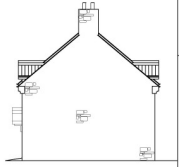
REAR ELEVATION HOUSES 1-3



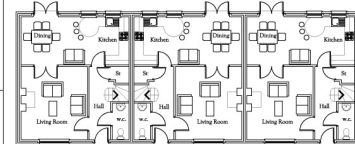
SIDE ELEVATION HOUSES 1-3



REAR ELEVATION HOUSES 4-6

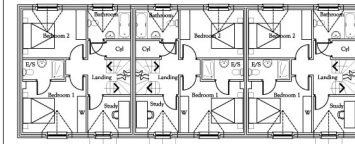


SIDE ELEVATION HOUSES 4-6

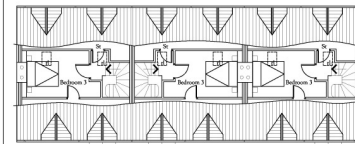


GROUND FLOOR PLAN

Dwelling Size  
118.39 sq m / 1280 sq ft

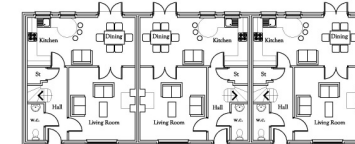


FIRST FLOOR PLAN



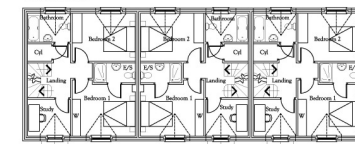
LOFT PLAN

Floor Plans Houses 1-3 1:100

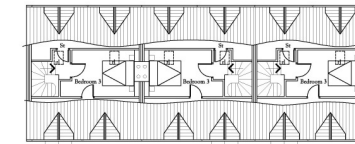


GROUND FLOOR PLAN

Dwelling Size  
118.39 sq m / 1280 sq ft



FIRST FLOOR PLAN



LOFT PLAN

Floor Plans Houses 4-6 1:100

**PLANNING NOTES:**  
Do not erect any improvements from the drawings for construction purposes. All drawings for alterations and improvements must be checked and approved by the Planning Department. Any alterations to the drawings must be approved by the Planning Department. The drawings are provided for information only and do not constitute a contract. The drawings are provided for information only and do not constitute a contract. The drawings are provided for information only and do not constitute a contract. The drawings are provided for information only and do not constitute a contract.

**THE PLANNING ACT 1990**  
The Planning Act 1990 provides the legal framework for the planning system in the United Kingdom. It sets out the powers of the Secretary of State and local planning authorities. It also sets out the rights of appeal against planning decisions. The Planning Act 1990 provides the legal framework for the planning system in the United Kingdom. It sets out the powers of the Secretary of State and local planning authorities. It also sets out the rights of appeal against planning decisions.

**DATE VALID:**  
13.10.2016

Rev B 25/08/2016 - Revised to suit new layout  
Rev A 08/08/2016 - House types revised

**The Planning & Design Partnership**  
PLANNING, ARCHITECTURAL, INTERIOR LANDSCAPE  
The Chiswick Studio,  
The Old Brickyard, Moor Lane, Stamford Bridge,  
York, The East Riding of Yorkshire, YO81 1HU.  
Telephone 01759 373656 Fax 01759 371810  
E-mail: chiswick@the-pdp.co.uk  
website: www.the-pdp.co.uk

Client:	
Project:	Outline Application for Housing Development at Manor Vale Lane, Kirbymoorside
Drawing:	Proposed Dwellings 1 to 6
Date:	August 2016
Scale:	1:100 @ A1
Drawn:	PAN
Checked:	B
Drawn by:	PLANNING
Drawn No:	KW/093/03/12